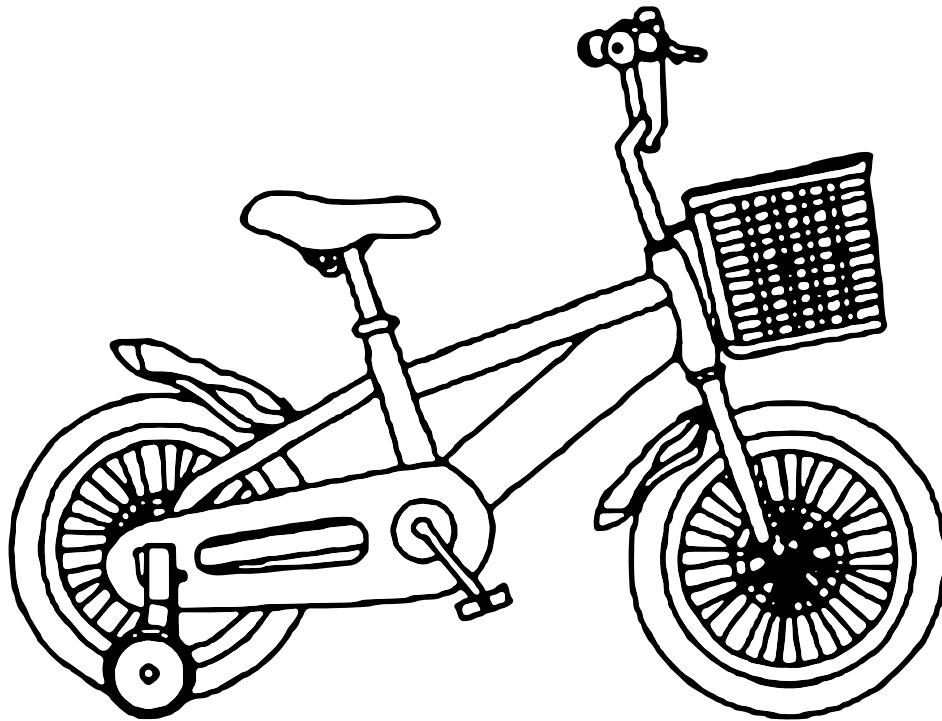


LITTLE NATION

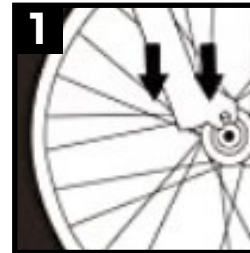
14 INCH WHEEL BIKE



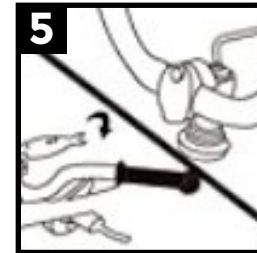
INSTRUCTION MANUAL

WARNING: Please read this Manual thoroughly before assembling, riding, or performing maintenance on this bicycle. Parental supervision is highly recommended when kids are using the bike. Always wear helmet and protective gears for protection and to avoid serious injury.

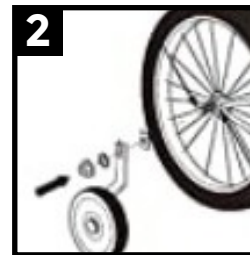
HOW TO ASSEMBLE THE BIKE MAIN BODY



Place front wheel into the fork, ensuring that it is centered in the ends, tighten the screw.



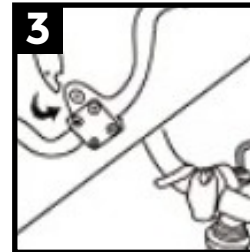
Tighten the bolt at the top of the handlebar stem.



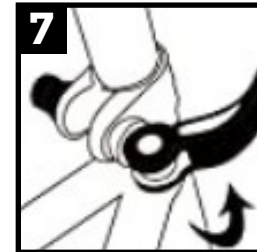
Place training wheel frame clamp into the hole, followed by a training wheel arm and nut (per illustration).



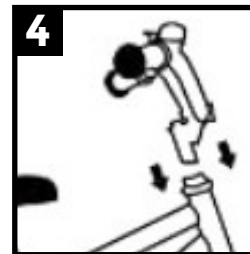
Insert seat post into frame. Adjust seat height so that the rider can touch the ground with both feet at the same time.



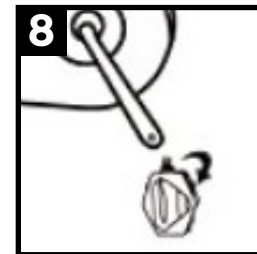
Remove the black plastic piece at the base of the handlebar, loosen the handlebar stem wedge.



Once the seat height is adjusted. Tighten the seat post clamp.

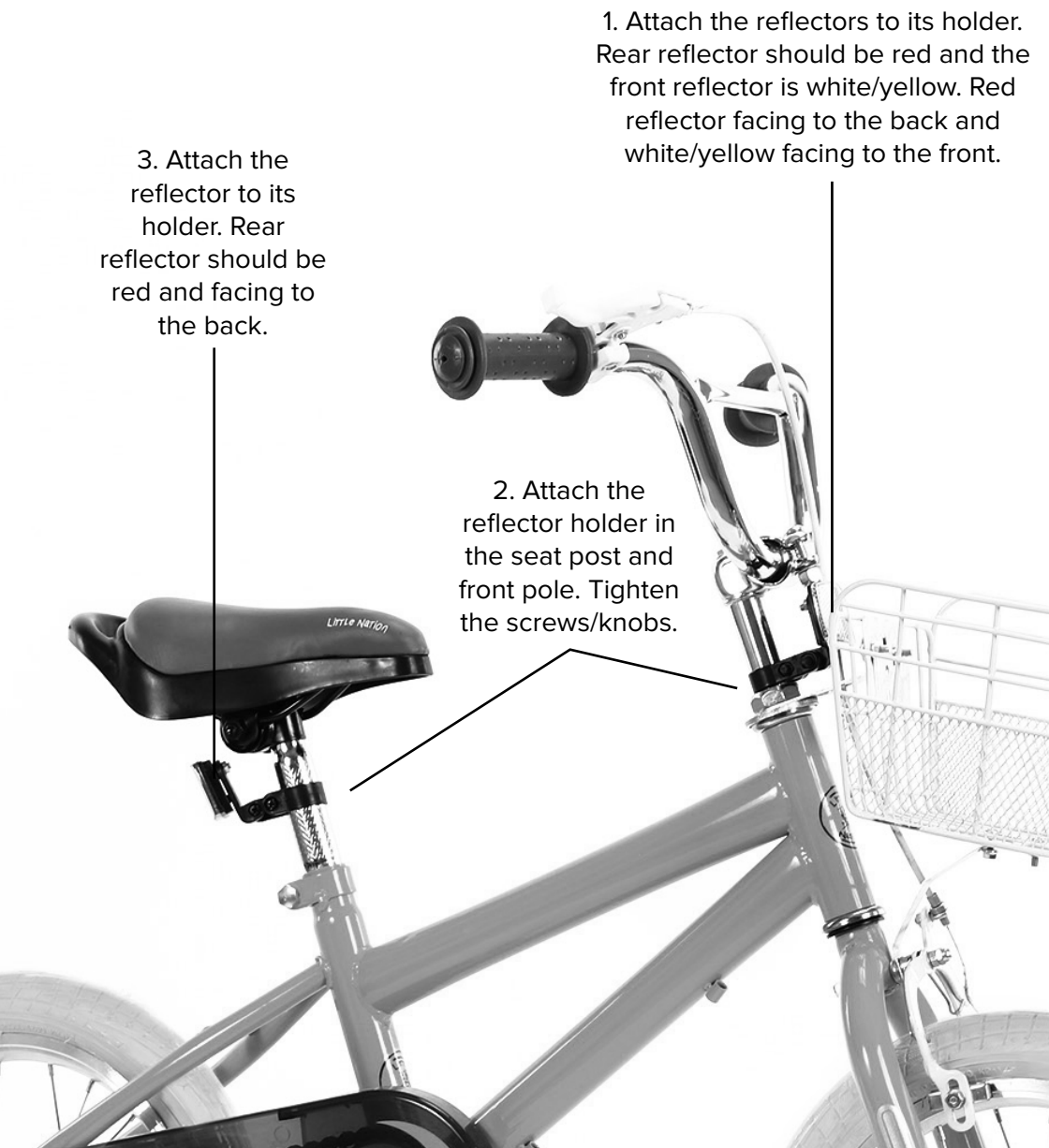


Insert the handlebar/stem into the frame head tube as shown in the illustration.

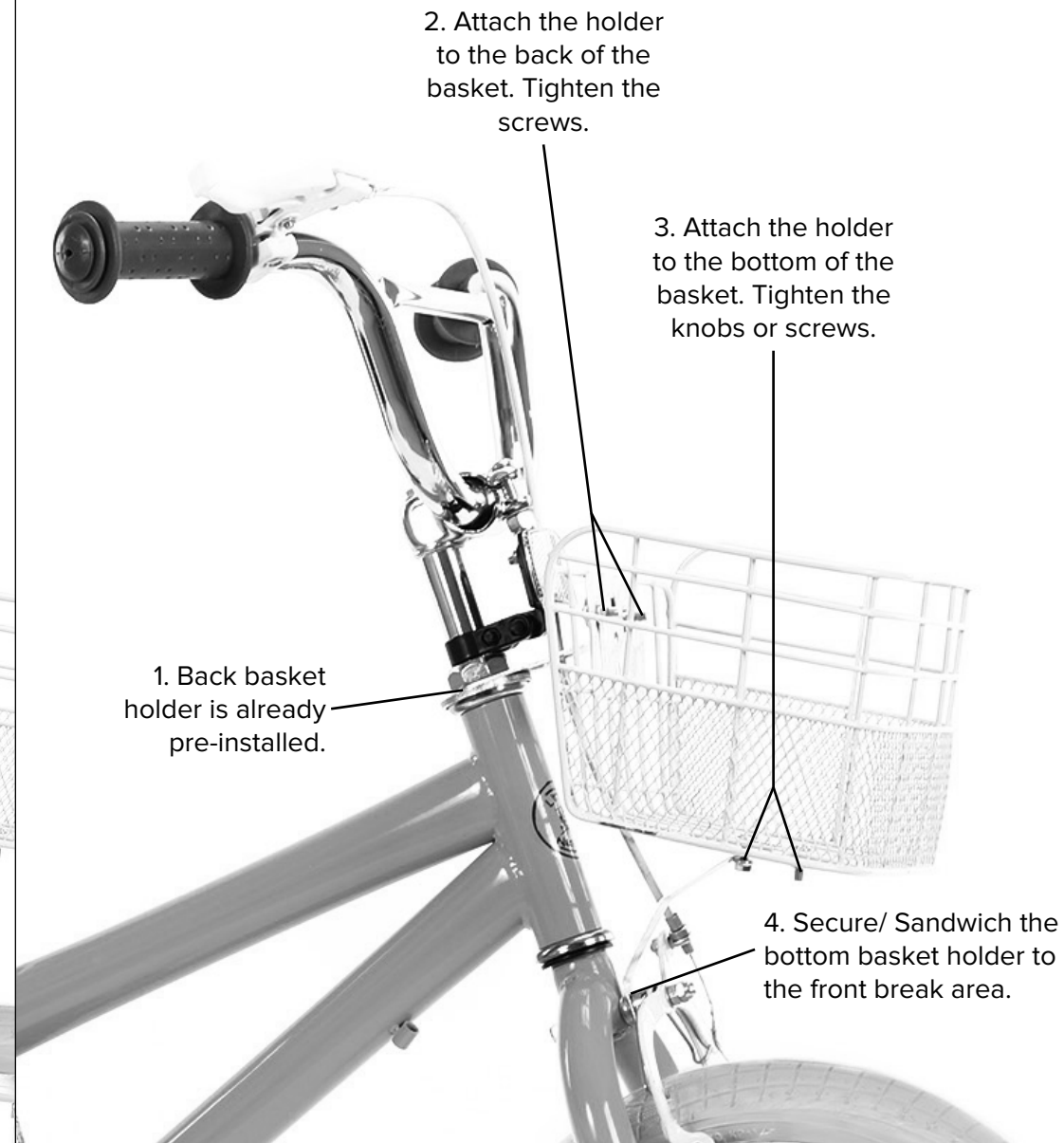


The right pedal (marked with an "R") screws on clockwise to the chain guard side crank, the left pedal (marked "L") screws on counter-clockwise to the other side.

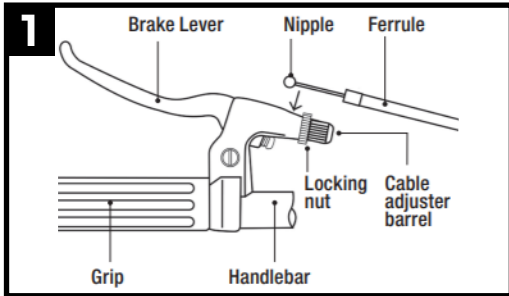
14 HOW TO ATTACH REFLECTORS



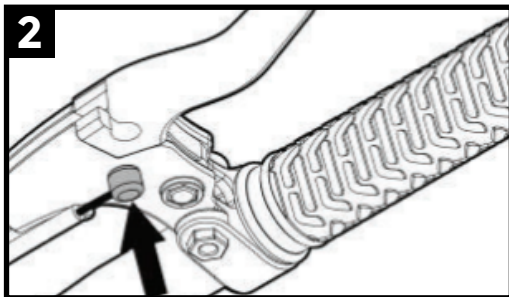
HOW TO ATTACH BIKE BASKET



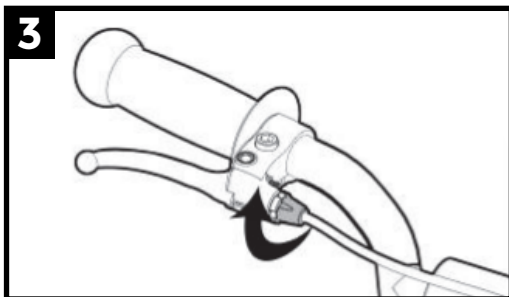
HOW TO ATTACH BREAKS



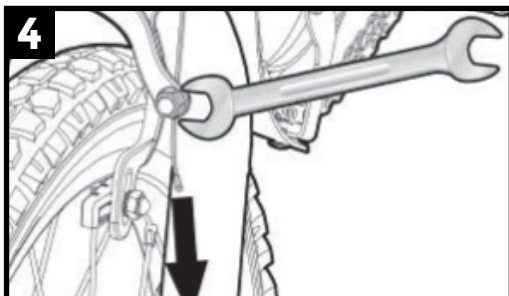
Hook-up the left-side brake lever cable that controls the front brake. Begin by loosening the locking nut on the front break. Take the loose cable on the opposite end (the end which goes into the brake lever on the handle bar).



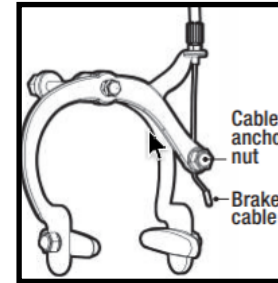
Slot the nipple end into place underneath the lever.



Rotate the cable adjuster barrel so the slots are aligned. Rotate the barrel adjuster to secure it.



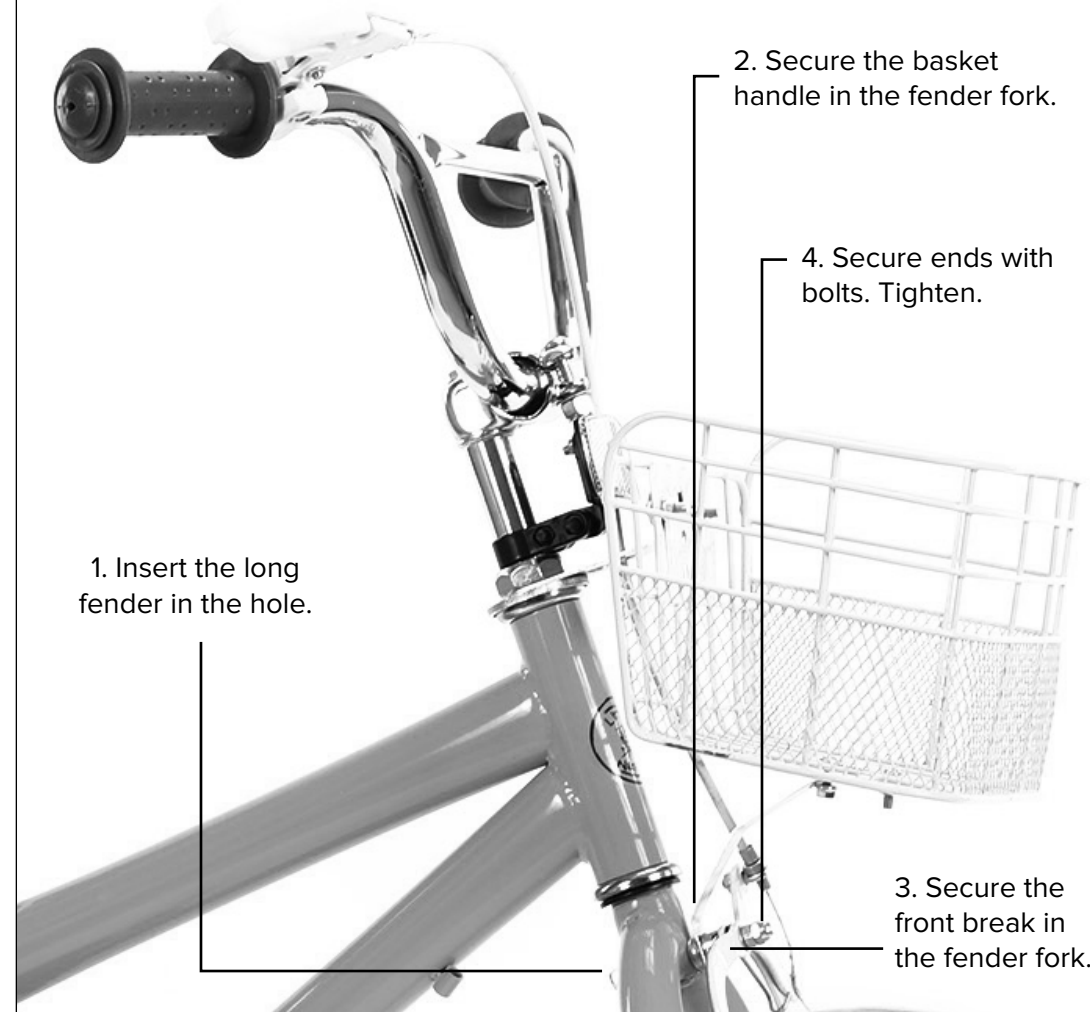
For step 4. See the details on the next page.



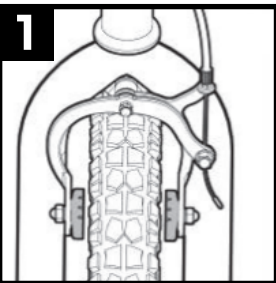
Loosen the cable anchor nut and pull the Brake cable through it. Squeeze the break Arms, pull the cable firmly through the cable Anchor nut and tighten the nut securely.

NOTE:

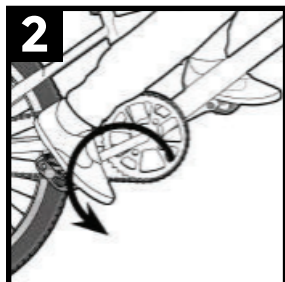
Little Nation is Equipped with a COASTER rear brake. It is pre-assembled on the bike.



TESTING BREAK FUNCTIONS



To test the function of the frog hand brake. Lift the front of The bike and spin the wheel. The wheel should not rub on the wheel. The pads should contact the rim on both sides at the same time when brake is applied. Try to move the bike and hold the brake firmly. The brake should hold well enough To keep the wheel from moving.



To test a coaster brake, lift the rear wheel and pedal the bicycle with your other hand. While the wheel is spinning, push the pedal backwards to engage the coaster brake. The wheel Should stop completely.